

QUICK REFERENCE HOW TO ADD A NEW COLORBAR

Corridor4DM Version:
5.2



Target Audience:
Technologists and Physicians

Primary Workstation:
Processing and Review

WARNING

Prior to changing any Preferences, users should check to ensure they are logged on as the correct user. Right-click on the **Preferences** button to see which user is currently logged on. To create different users in 4DM, see the [How To Create Different 4DM Users & Preferences](#) Quick Reference Guide.



Clinical Importance

Corridor4DM provides an extensive selection of the most commonly utilized colorbars for viewing cardiac images. However, some users may have preferred colorbars that are not already included in the program. Our software allows the user to customize this list by giving them the option to easily add colorbars to the **Available Color Stripes** within **Colorbar Preferences**.

To add a new colorbar, follow these step-by-step instructions:

- Click the **Preferences** button in the 4DM **Application Control Panel** (circled in blue in Figure 1).
- Click on the **Colorbars** button under **User Specific Settings** (circled in red in Figure 2).
- Under the **Directory/Format** section, **note the Colorbar Directory** location (circled in green in Figure 2). This is where 4DM stores all of the colorbar files on your computer. You will need to copy/paste the new colorbar file into this directory location in order for it to become available for use within 4DM.

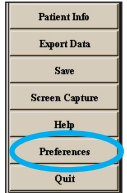


Figure 1: Application Control Panel.

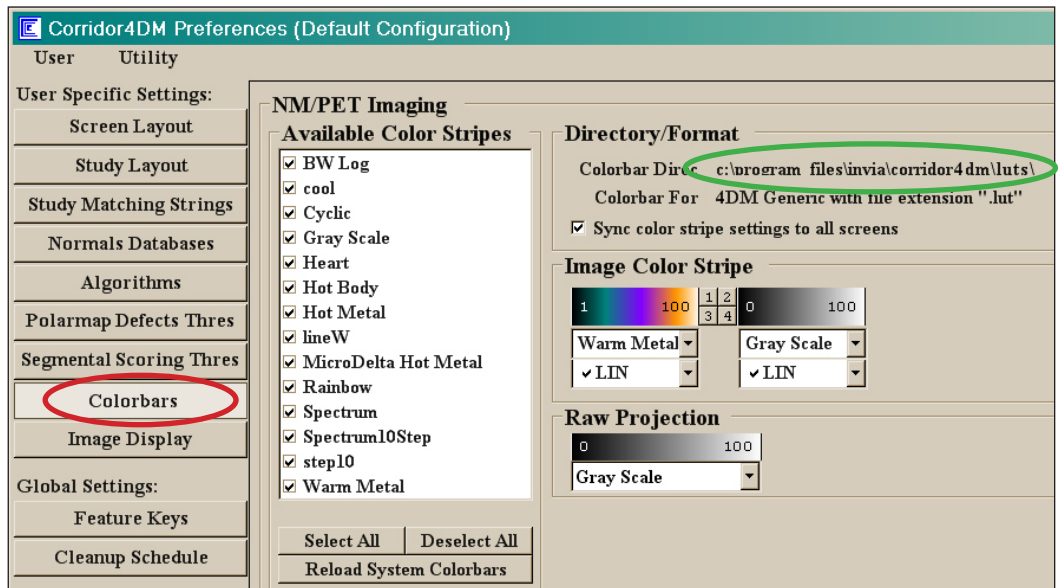


Figure 2: Shows the **Colorbars** screen within the **Preferences** menu.

- **Exit** the **Preferences** menu and then **exit** the **Corridor4DM** program.
- **Navigate** to the new colorbar file you want to add to 4DM. Right-click on it and select **Copy**.

QUICK REFERENCE HOW TO ADD A NEW COLORBAR



Note: Colorbar files are in the format of "filename.lut."

- **Navigate to C:\Program Files\INVIA\Corridor4DM\luts.** Right-click in the white background and select **Paste** (see Figure 3).
- **Launch 4DM.** Click the **Preferences** button, and click on the **Colorbars** button (circled in red in Figure 4).
- Click on the **Reload System Colorbars** button (circled in blue in Figure 4) in the **Available Color Stripes** section. Selecting this button prompts 4DM to query the list of all available colorbars. As an example for this guide, we added "BWParabolic.lut" as the "new" colorbar (circled in pink in Figure 4) which now appears in the list of **Available Color Stripes**.
- Click the **Save** button.

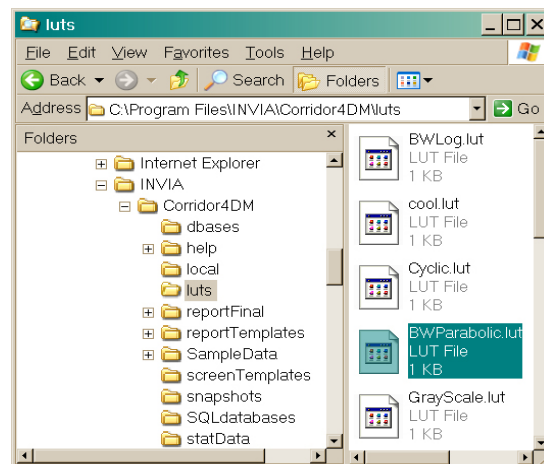


Figure 3: Shows the navigation path in your PC where all colorbar files are stored for use within 4DM. The highlighted colorbar file "BWParabolic.lut" has been copied and pasted into this directory.

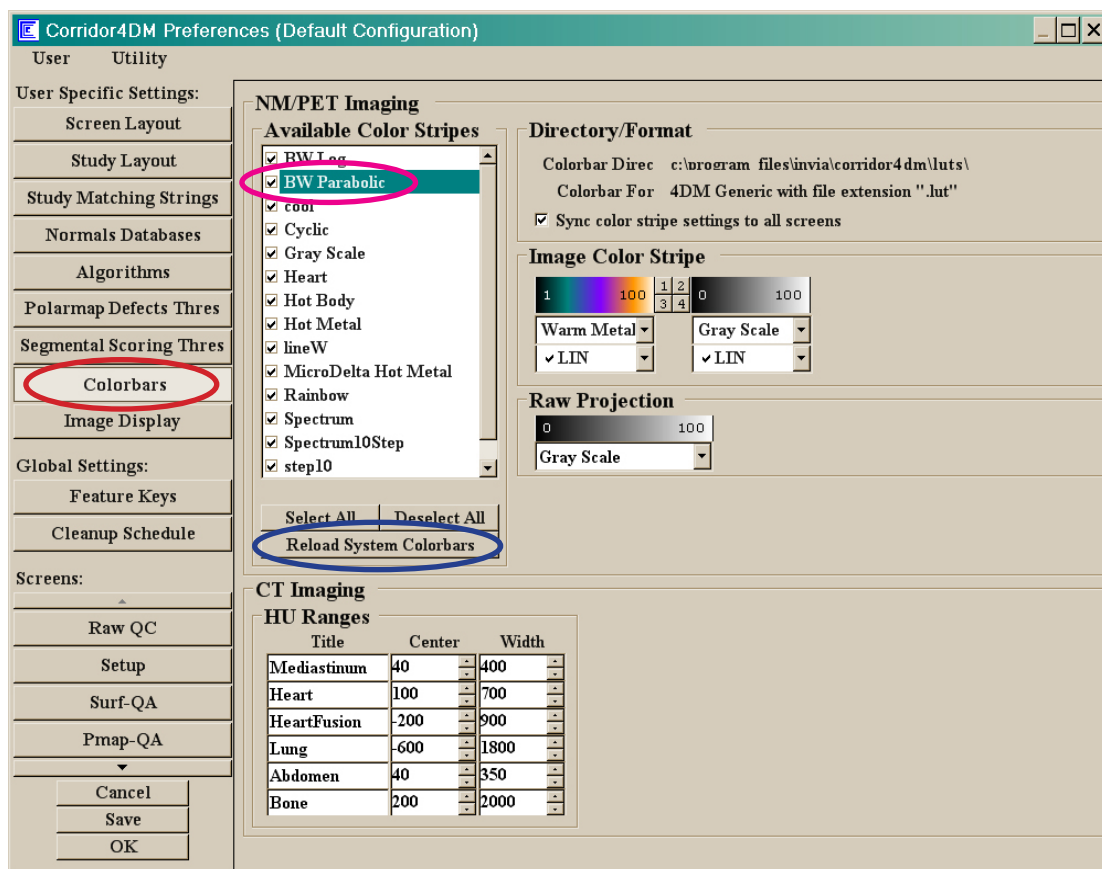


Figure 4: Shows the new BW Parabolic colorbar file in the Available Color Stripes list within Colorbar Preferences.