

QUICK REFERENCE

HOW TO CHANGE UNIVERSAL COLORBAR SETTINGS

**Corridor4DM Version:**  
5.2



**Target Audience:**  
Technologists and Physicians

**Primary Workstation:**  
Processing and Review

**WARNING**

Prior to changing any Preferences, users should check to ensure they are logged on as the correct user. Right-click on the **Preferences** button to see which user is currently logged on. To create different users in 4DM, see the [How To Create Different 4DM Users & Preferences](#) Quick Reference Guide.



**Note:** The **Primary** colorbar is on the **left**. The **Secondary** colorbar is on the **right**. 4DM uses **Warm Metal** as the default Primary and Secondary color scheme.



**Note:** **Raw Projection** color scheme preferences are **not** affected by the **Primary** or **Secondary** colorbar settings. To change **Raw Projection** colorbar settings, select the desired color scheme from the **Raw Projection** dropdown menu (circled in pink in Figure 2).



**Note for CT Users:** The **CT Colorbar** is always set to grayscale. However, users can edit the titles, center, and width of the **HU Ranges** in the **CT Imaging Colorbar Preferences**.



Clinical Importance

4DM gives the user the option to define/change the **universal** (default) colorbar settings for all screens. An additional feature is that you can set specific colorbar settings for **specific** screens (see [How To Customize Colorbars for Specific Screens](#) Quick Reference Guide).

To set or change the default **universal** color schemes:

- Left-click on the **Preferences** button in the **Application Control Panel** (circled in blue in Figure 1).
- Click on the **Colorbars** button (circled in red in Figure 2).

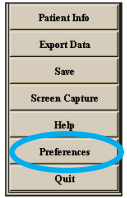


Figure 1: Application Control Panel.

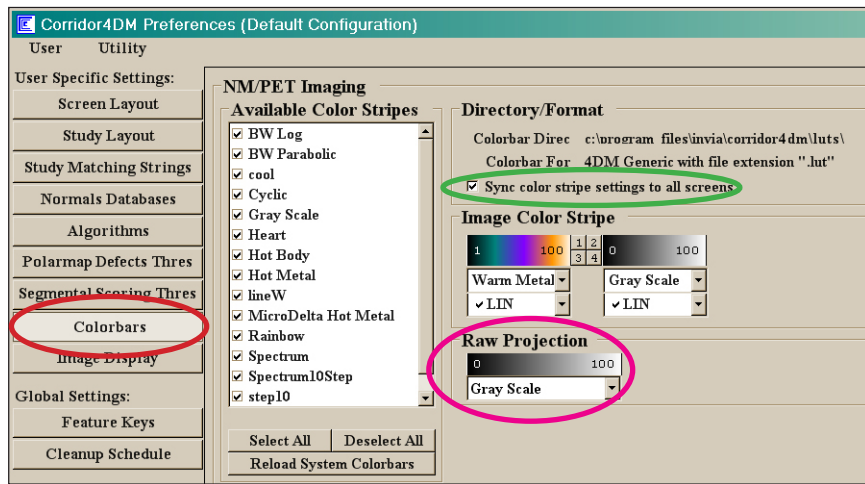


Figure 2: Shows the **Colorbars** screen from within the **Preferences** menu.

- Verify **Sync color stripe settings to all screens** is selected (circled in green in Figure 2).
- The **Image Color Stripe** section shows the current default **universal** colorbar settings (see Figure 2).

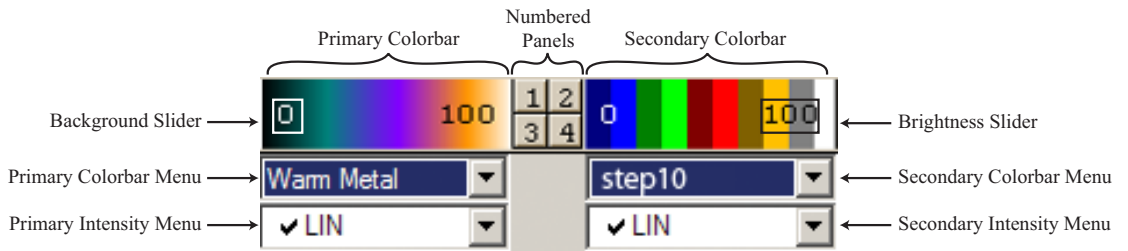


Figure 3: Shows the **4DM Dual Colorbar** with proper labeling of each section.

- Left-click the **Primary** colorbar dropdown menu (black triangle next to the color scheme name) and left-click on the desired color scheme. Repeat this process for the **Secondary** colorbar.
- Click the **Save** button. The program will automatically exit the **Preferences** menu and your new **universal** colorbar settings will update immediately to all applicable screens.