

QUICK REFERENCE

CORRIDOR4DM PERSONAL FEATURE KEY UPDATE GUIDE

Corridor4DM Version:
Personal

Target Audience:
IT Personnel
Physicians

Primary Workstation:
Stand-alone PC or
Laptop



Note: If an error occurs during the update or you need assistance, please call our Product Support line at (734) 205-1231, x501.



To update your Corridor4DM Personal Feature Key information, follow these step-by-step instructions:

- Launch **Corridor4DM Personal** from **Corridor Browser**
- Click **Preferences** from the Application Control Panel (circled in blue in Figure 5).
- Under **Global Settings**, click **Feature Keys** (circled in pink in Figure 6).
- In the **Software Key** field (circled in green in Figure 6) type in your new 18-digit **Software Key** *exactly* as it appears on the Welcome Letter from INVIA.
- Click the **Check Status** button.
- The **Status** field will confirm the new software key and provide a new expiration date in year-month-day format (see Figure 7).
- Click **Save**. This will automatically close the Corridor4DM **Preferences** window.

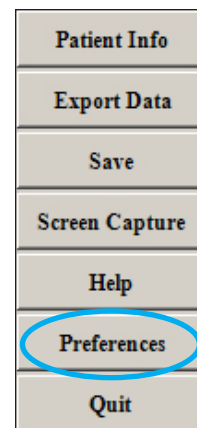


Figure 5: Shows the Application Control Panel buttons.

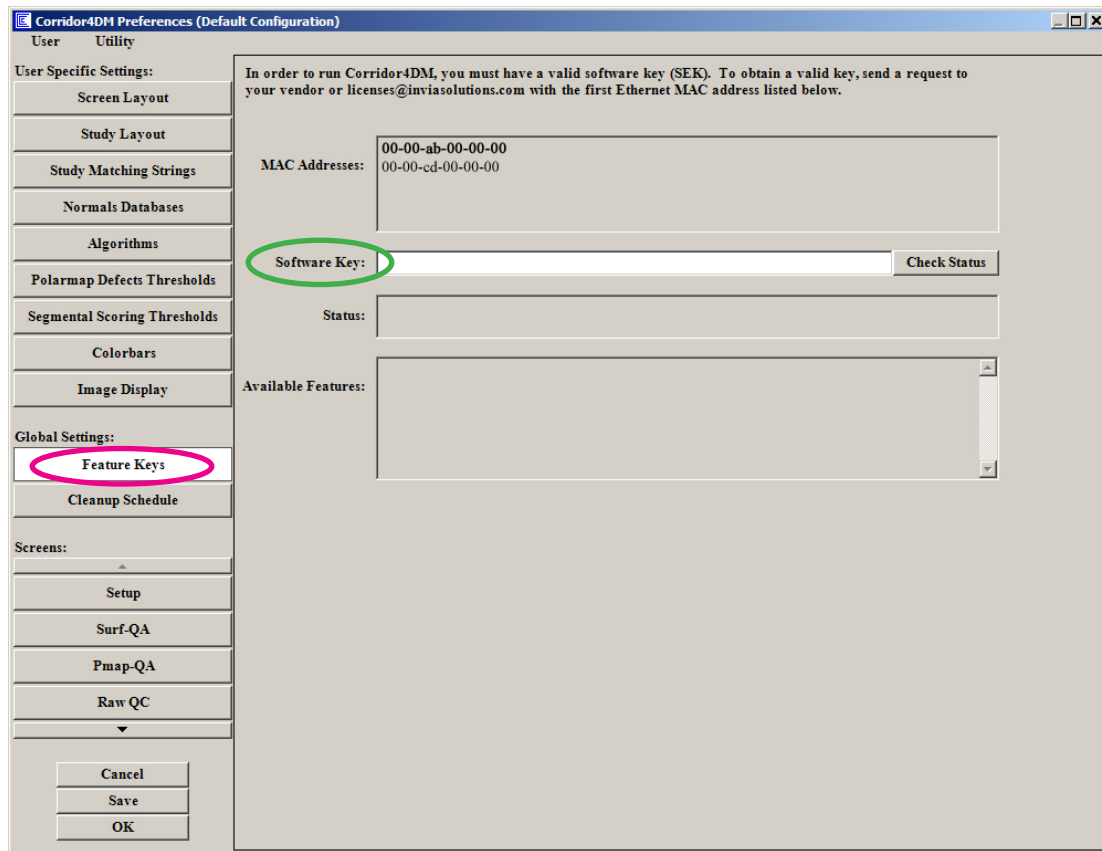


Figure 6: Shows the **Feature Keys** screen within the **Preferences** menu. The **Feature Keys** button is circled in pink. Input the 18-digit software key in the **Software Key** section, circled in green.



Figure 7: Shows the **Status** section once a valid software key has been entered in the **Software Key** section.