

QUICK REFERENCE

HOW TO CUSTOMIZE COLORBARS FOR SPECIFIC SCREENS

**Corridor4DM Version:**  
5.2



**Target Audience:**  
Technologists and Physicians

**Primary Workstation:**  
Processing and Review

**WARNING**

Prior to changing any Preferences, users should check to ensure they are logged on as the correct user. Right-click on the **Preferences** button to see which user is currently logged on. To create different users in 4DM, see the [How To Create Different 4DM Users & Preferences](#) Quick Reference Guide.



**Note:** The **Primary** colorbar is on the **left**. The **Secondary** colorbar is on the **right**. 4DM uses **Warm Metal** as the default Primary and Secondary color scheme.



Right-click any colorbar to view the active color stripes and change the displayed color scheme on-the-fly.



Clinical Importance

Here's a scenario where customizing a specific screen's colorbar settings will optimize a user's workflow in 4DM:

A user wants to be able to maximize efficiency and decrease the time spent changing colorbar settings on the **Pmap-QA** screen. The user prefers viewing the perfusion images with the **Warm Metal** color scheme, but also likes changing temporarily to the **Step10** color scheme to better visualize count drop-offs to find the base of the heart.

**Resolution:**

By changing the default **Pmap-QA** screen settings in the **Preferences** menu and setting the **Primary** colorbar to the **Warm Metal** color scheme and the **Secondary** colorbar to the **Step 10** color scheme, the user can activate the use of the **numbered (1,2,3,4) panel toggles**. Utilizing the numbered panels not only enables viewing the **Secondary** color scheme quickly, but also allows choosing which of the four viewports to apply it to.

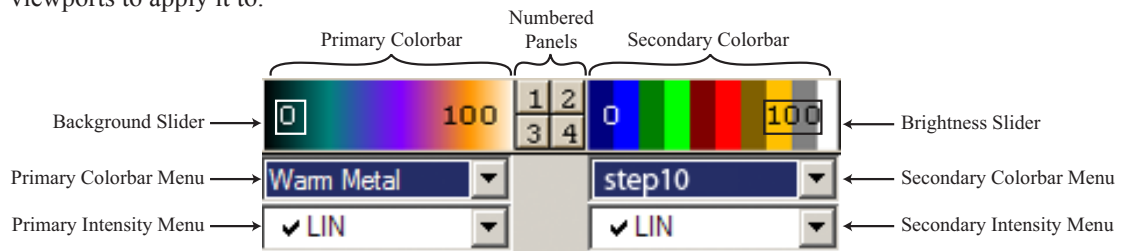


Figure 1: Shows the 4DM Dual Colorbar with proper labeling of each section.

Follow these step-by-step instructions to change the colorbar defaults for a specific screen:

- Click the **Preferences** button in the 4DM Application Control Panel.
- Click on the **Colorbars** screen button under **User Specific Settings** (circled in red in Figure 2).
- Uncheck** the **Sync color stripe settings to all screens** checkbox at the top of the screen under the **Directory/Format** section (circled in green in Figure 2).

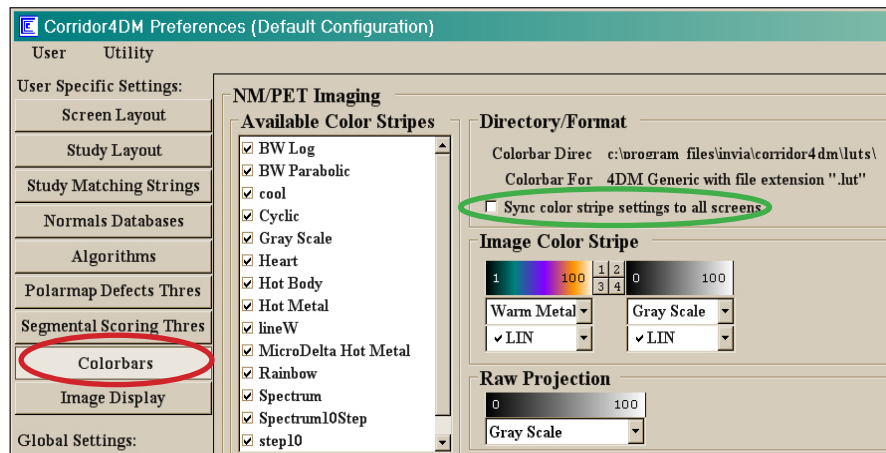


Figure 2: Shows the **Colorbars Preference** screen with **Sync color stripe settings to all screens** deselected.

QUICK REFERENCE HOW TO CUSTOMIZE COLORBARS FOR SPECIFIC SCREENS

- Click on the **Pmap-QA** screen button (circled in red in Figure 3) to change this specific screen's **Primary** colorbar to **Warm Metal** and the **Secondary** colorbar to **Step10**.



**Note:** The **Primary** colorbar is on the **left**. The **Secondary** colorbar is on the **right**.

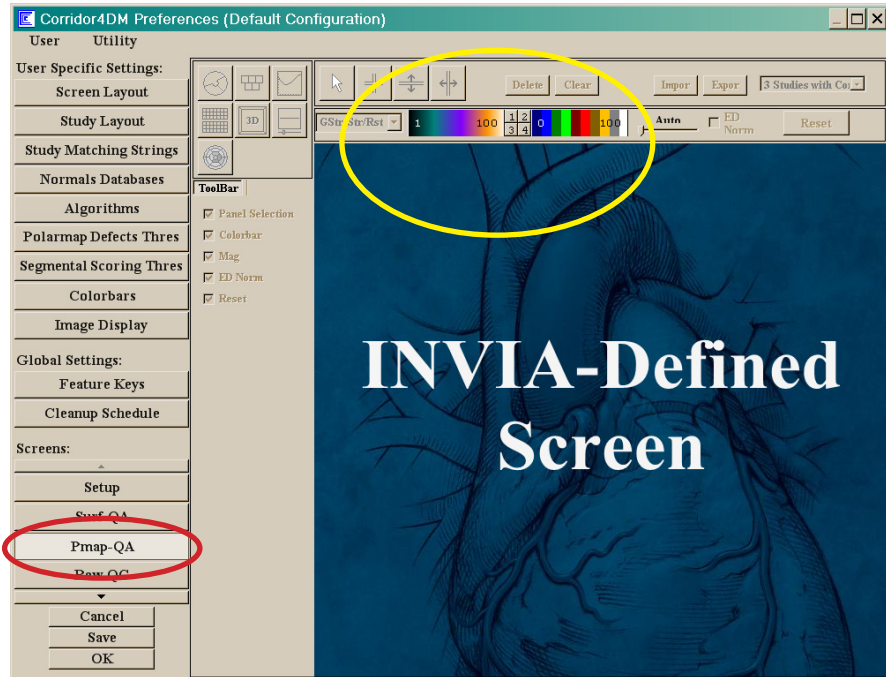


Figure 3: Shows the Pmap-QA screen as seen from within the Preferences menu. The Dual Colorbar is circled in yellow. If changed within this dialog, colorbar preferences for the Pmap-QA screen are permanent.

- **RIGHT-CLICK inside the Primary colorbar.** Left-click on the colorbar **dropdown menu** (black triangle). Scroll down and highlight the color scheme named **Warm Metal** (see Figure 3).
- **RIGHT-CLICK inside the Secondary colorbar.** Left-click on the colorbar **dropdown menu** (black triangle). Scroll down and highlight the color scheme named **Step 10** (see Figure 3).
- Click **Save**. The new colorbar defaults for the **Pmap-QA** screen will automatically apply to the currently displayed study and all future studies in 4DM.
- For assistance with changing the *universal* colorbar settings, see the [How To Change Universal Colorbar Settings](#) Quick Reference Guide.