

QUICK REFERENCE

HOW TO CUSTOMIZE THE LIST OF ACTIVE SCREENS

Corridor4DM Version:
6.0 and 6.1



Target Audience:
Technologists and Physicians

Primary Workstation:
Processing and Review

WARNING

Prior to changing any Preferences, users should check to ensure they are logged in as the correct user. Right-click on **Preferences** to see which user is currently logged in. To create different users in 4DM, see the [How To Create Different 4DM Users & Preferences](#) Quick Reference Guide.



Not sure which review screens you want to activate? We can do it for you!

Select your **Molecular Imaging Workflow** option within the **Screen Layout** page: MPI (default), AC MPI, CTAC MPI, SPECT Viability, and/or PET Viability (see yellow rectangle in Figure 2).

Click **Apply** to update the **Active Screens**.

Note: The **Setup** and **Surf-QA** screens are **always** activated. These are the only two screens that users are not allowed to deactivate.

Clinical Importance

All Corridor4DM users are not the same. That is why the **Screen Selector Panel** (Figure 1) can have as many (or as few) review screens activated as the user would like, and in whatever order they want. Most users will want to remove screens that they will not use and customize the order of the active screens to mimic their personal workflow for processing, review, or a combination of both. Users can also delete or rename user-defined screens within 4DM.

To customize the list of review screens in 4DM, follow these step-by-step instructions:

- Launch 4DM and click on **Preferences** in the **Application Control Panel**.
- The **Screen Layout** page is the default window presented within **Preferences** (circled in red in Figure 2). All screens displayed in the **Screen Selector Panel** for that user are listed in the **Active Screens** section (pink rectangle in Figure 2).
- The order in which the screens appear in the **Screen Selector Panel** is the same **top-to-bottom** order specified in the **Active Screens** section (Figure 2) of the **Screen Layout** page within **Preferences**.

Tomo QA
Setup
Surf QA
Pmap QA
Images
Images + Quant
Func + Quant
MPI Summary
NM Viewer
SC Viewer

Figure 1: Default 4DM Screen Selector Panel

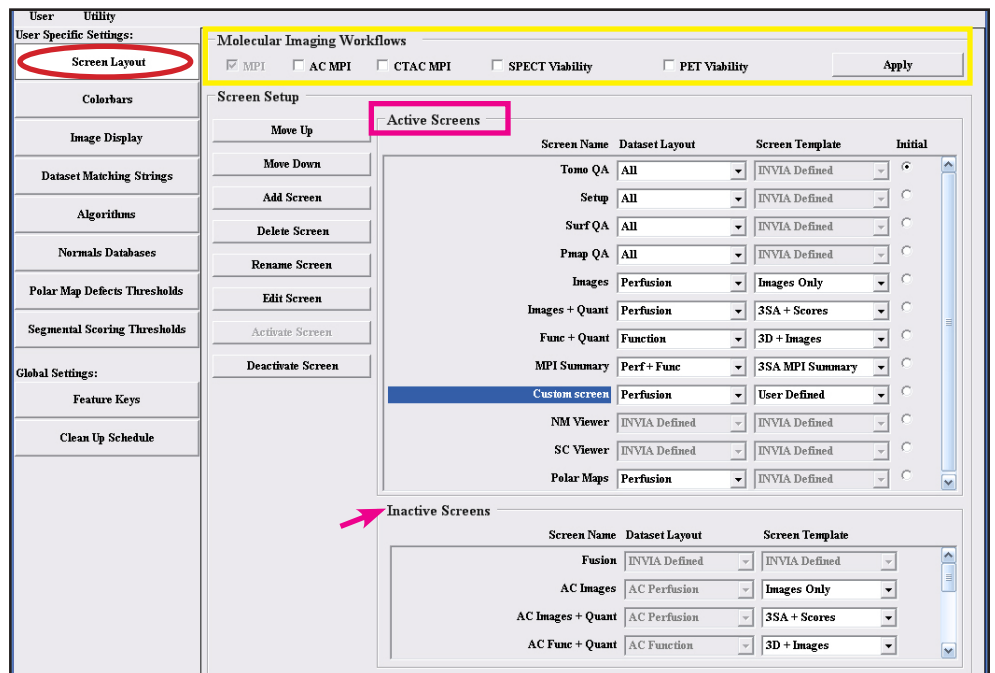


Figure 2: The Screen Layout page within the Preferences menu.

- To **move a screen up or down** (change the order in which they appear in the **Screen Selector Panel**): From **Screen Layout Preferences**, click on the **screen name** so that it is **highlighted** (an example is the **Custom Screen** seen in Figure 2). Click on the **Move Up** or **Move Down** button until it is placed in the preferred location. Repeat the process of highlighting the screen names and moving them up or down as desired.

QUICK REFERENCE

HOW TO CUSTOMIZE THE LIST OF ACTIVE SCREENS

Note: INVIA-defined screens **cannot** be permanently deleted from the list of screens—they can only be **deactivated**.

Note: Users can only **rename** or **delete** user-created screens.

Note: Users can **edit** both active and inactive screens.

Note: The **Inactive Screens** list (see pink arrow in Figure 2) includes all **Deactivated** screens. Users may need to use the scroll bar to find the screen they wish to activate.

- To **Add** a new custom screen, click on the **Add Screen** button. An **Add Screen** window will present (Figure 4) allowing entry of the new screen name up to 16 (alpha-numeric only) characters in length. To learn more about how to create custom screens, see the [How to Create a Custom Screen](#) Quick Reference Guide.
- To **Delete** a screen, click on the screen name so that it is highlighted and click **Delete Screen** (button is shown in Figure 3). A **Warning** window will present (Figure 5). Click **Yes** to continue with the delete action. Click **No** to cancel the delete action.
- To **Rename** a screen, click on the screen name so that it is highlighted and click **Rename Screen** (button is shown in Figure 3). A **Rename Screen** window will present that allows entry of the new screen name up to 16 (alpha-numeric only) characters in length (Figure 6). Type in the new screen name and click **OK**. The new screen name will update immediately.
- To **Edit** any screen, click on the screen name so that it is highlighted and click the **Edit Screen** button. This launches the 4DM screen designer (Figure 7). Change screen-specific preferences within this window and click **Close** when your desired edits are complete. To learn more about how to create custom screens, see the [How to Create a Custom Screen](#) Quick Reference Guide.
- To **Activate** any screen, click to select it in the **Inactive Screens** section so that it appears highlighted. Click the **Activate Screen** button. The screen will appear at the bottom of the list of **Active Screens**.
- To **Deactivate** any screen, click on the active screen you wish to deactivate so that it appears highlighted, and click on the **Deactivate Screen** button.
- Click the **Save** button after you are finished with customizing screens. The program will automatically exit out of **Preferences** and the changes will be immediately applied to the **Screen Selector Panel**.

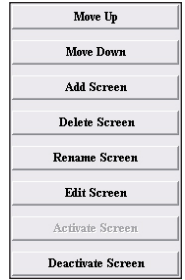


Figure 3: Screen customization tools available in Screen Layout Preferences.

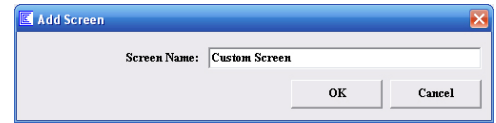


Figure 4: The Add Screen window.

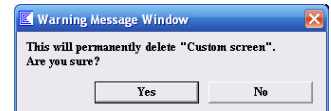


Figure 5: The Warning window presents when the Delete Screen button is selected.

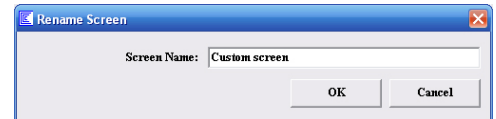


Figure 6: The Rename Screen window.

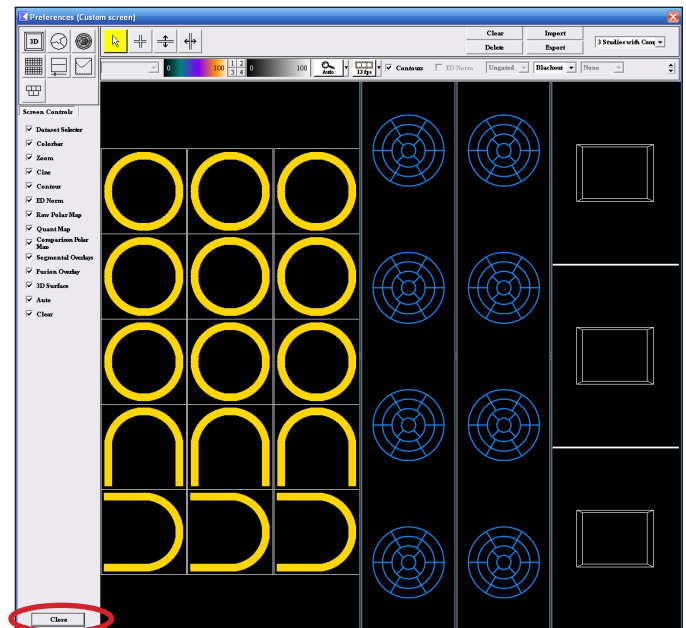


Figure 7: The 4DM Screen Designer window displaying a Custom Screen configuration consisting of the following screen objects (left-to-right): 3SA slices, Polar Maps, Scores, and 3Ds. Click Close (circled in red) when your edits are complete.