

QUICK REFERENCE

HOW TO CUSTOMIZE SPECIFIC SCREEN COLOR SCHEMES

Corridor4DM Version:
6.0 and 6.1



Target Audience:
Technologists and Physicians

Primary Workstation:
Processing and Review

WARNING

Prior to changing any Preferences, users should check to ensure they are logged in as the correct user. Right-click on the **Preferences** button to see which user is currently logged in. To create different users in 4DM, see the [How To Create Different 4DM Users & Preferences](#) Quick Reference Guide.



Note: The **Primary** colorbar is on the **left**. The **Secondary** colorbar is on the **right**. 4DM uses **Warm Metal** as the default Primary color scheme and **Grayscale** as the default Secondary color scheme.



Right-click any colorbar to view the active color schemes and change the displayed color scheme on-the-fly.



Clinical Importance

Here's a scenario where customizing a specific screen's color scheme settings will optimize a user's workflow in 4DM:

A user wishes to maximize efficiency and decrease the time spent changing color scheme settings on the **Pmap-QA** screen. The user prefers viewing the perfusion images with the Warm Metal color scheme, but also likes changing temporarily to the Step10 color scheme to better visualize count drop-offs to find the base of the heart.

Resolution for the above scenario:

By changing the default **Pmap-QA** screen settings in the **Preferences** menu and setting the Primary colorbar to the Warm Metal color scheme and the Secondary colorbar to the Step10 color scheme, the user can activate the use of the **numbered (1,2,3,4) panel toggles**. Utilizing the numbered panels not only enables viewing the Secondary color scheme quickly, but also allows choosing which of the four viewports to apply it to.

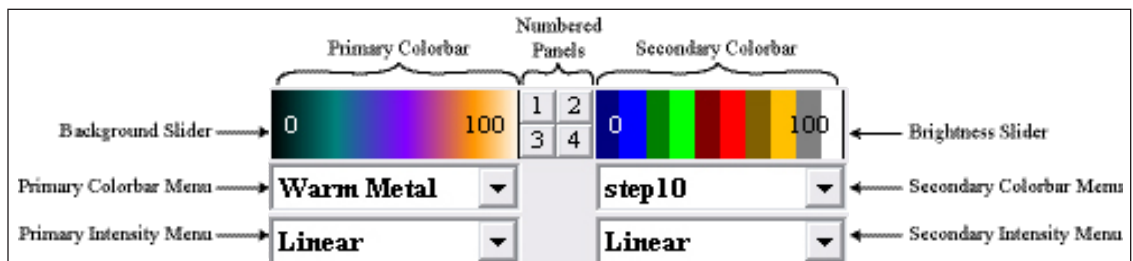


Figure 1: The 4DM Dual Colorbar with proper labeling of each section.

Follow these step-by-step instructions to change the colorbar defaults for a specific screen (for this example we will use Pmap QA):

- Click the **Preferences** button in the 4DM Application Control Panel.
- Click on the **Colorbars** page (circled in red in Figure 2) under **User Specific Settings**.
- **Uncheck** the **Sync colorbar settings to all screens** checkbox at the top of the screen under the **Directory/Format** section (circled in green in Figure 2).

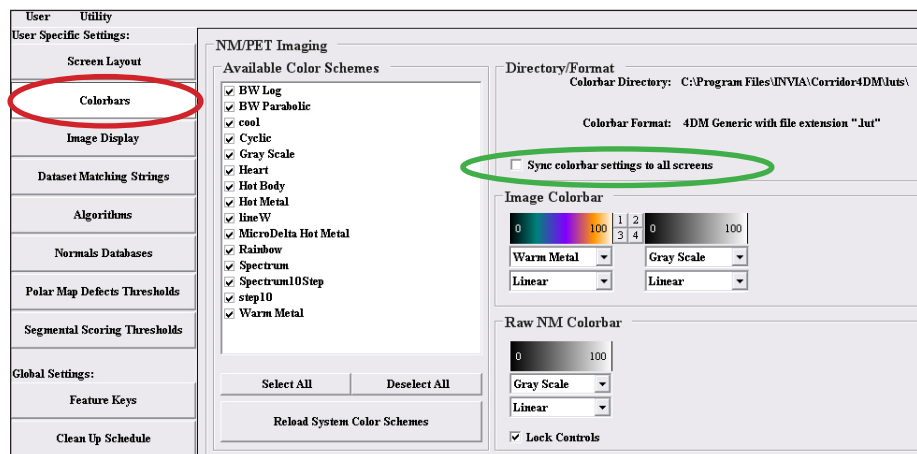


Figure 2: The Colorbars Preference page with Sync colorbar settings to all screens deselected (circled in green).

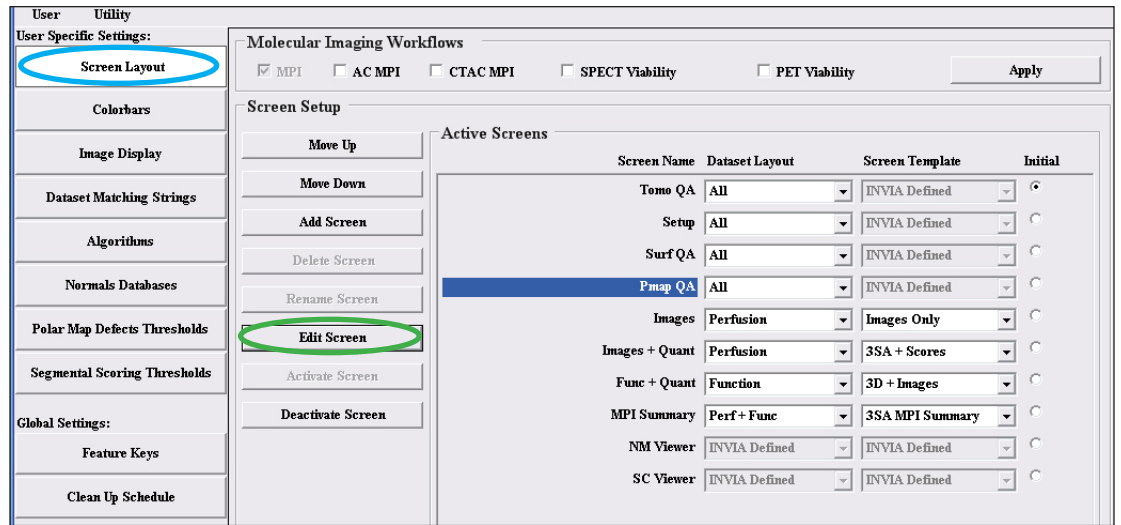


Figure 3: The **Screen Layout** page within the **Preferences** menu.

- Click on the **Screen Layout** page within the **Preferences** menu.
- Click on the **Pmap-QA** screen so that it is highlighted in blue (Figure 3).
- Click **Edit Screen** (circled in green in Figure 3).
- A **Preferences (Pmap QA)** window will appear.

To Change this specific screen's Primary colorbar to Warm Metal and the Secondary colorbar to Step10:

- RIGHT-CLICK inside the **Primary (left)** colorbar. Scroll down and highlight the color scheme named **Warm Metal**.
- RIGHT-CLICK inside the **Secondary (right)** colorbar. Scroll down and highlight the color scheme named **Step 10** (Figure 4).
- Click **Close** (circled in red in Figure 4).
- Click **Save** to exit the **Preferences** menu.
- The new colorbar defaults for the **Pmap-QA** screen will automatically apply to the current and all future 4DM sessions.

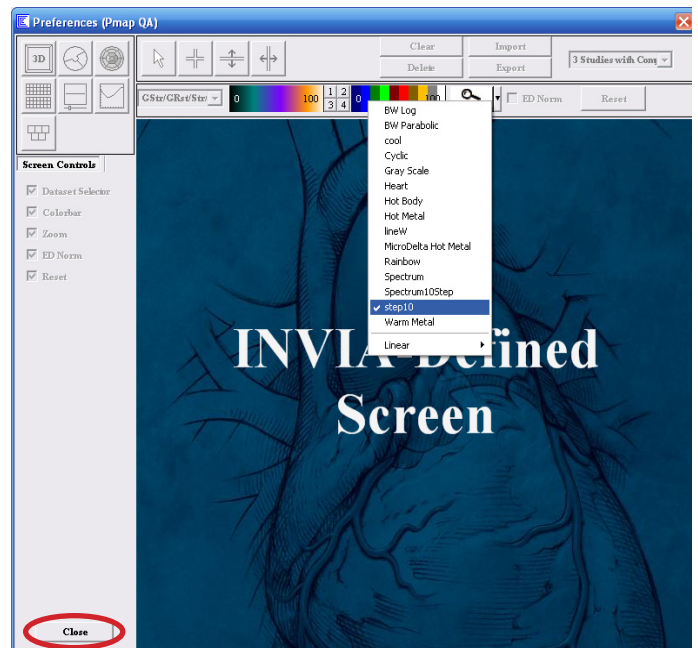


Figure 4: The **Pmap-QA** screen as seen from within the **Preferences** menu.

Note: The **Primary** colorbar is on the **left**. The **Secondary** colorbar is on the **right**.

Note: For assistance with changing the **universal** colorbar settings, see the [How To Change Universal Color Scheme Settings](#) Quick Reference Guide.