

QUICK REFERENCE

HOW TO ADD A NEW COLOR SCHEME

Corridor4DM Version:
6.0 and 6.1



Target Audience:
Technologists and Physicians

Primary Workstation:
Processing and Review

WARNING

Prior to changing any Preferences, users should check to ensure they are logged in as the correct user. **Right-click** on the **Preferences** button to see which user is currently logged in. To create different users in 4DM, see the [How To Create Different 4DM Users & Preferences](#) Quick Reference Guide.



Clinical Importance

Corridor4DM provides an extensive selection of the most commonly utilized color schemes for viewing cardiac images. However, some users may have preferred color schemes that are not already included in the program. Our software allows the user to customize this list by giving them the option to easily add to the **Available Color Schemes** list within **Colorbars Preferences**.

To add a new color scheme, follow these step-by-step instructions:

- Click on **Preferences** in the 4DM **Application Control Panel** (circled in light blue in Figure 1).
- Click on the **Colorbars** page under **User Specific Settings** (circled in red in Figure 2).
- Under the **Directory/Format** section, **note** the **Colorbar Directory** location (circled in green in Figure 2). This is where 4DM stores all of the color scheme files on your computer. You will need to copy/paste the new color scheme .lut file into this directory location in order for it to become available for use within 4DM.



Figure 1: Application Control Panel

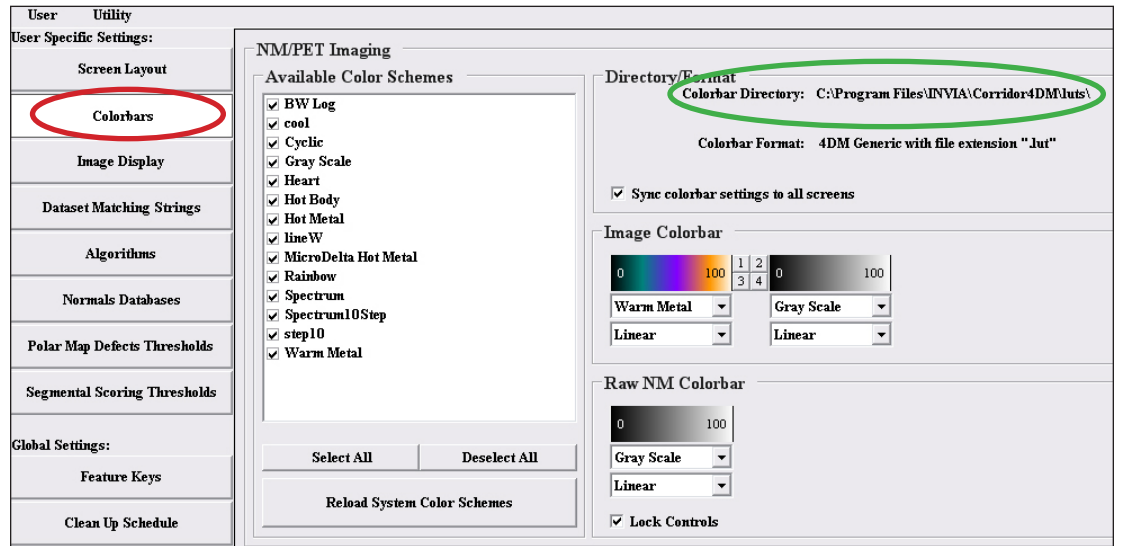


Figure 2: The Colorbars page within the Preferences menu.

- **Exit** the **Preferences** menu and then exit the **Corridor4DM** program.
- **Navigate** to the new colorbar file you want to add to 4DM. Right-click on it and select **Copy**.

QUICK REFERENCE

HOW TO ADD A NEW COLOR SCHEME



Note: Color scheme files are in the format of "filename.lut."

- **Navigate to C:\Program Files\INVIA\Corridor4DM\luts.** Right-click in the white background and select **Paste** (Figure 3).
- **Launch 4DM.** Click the **Preferences** button, and click on the **Colorbars** page (circled in red in Figure 4).
- Click the **Reload System Color Schemes** button (circled in blue in Figure 4) in the **Available Color Schemes** section. Selecting this button prompts 4DM to query the list of all available color schemes. As an example for this guide, we added "BWParabolic.lut" as the "new" colorbar (circled in pink in Figure 4) which now appears in the list of **Available Color Schemes**.
- Click **Save** to exit **Preferences**.

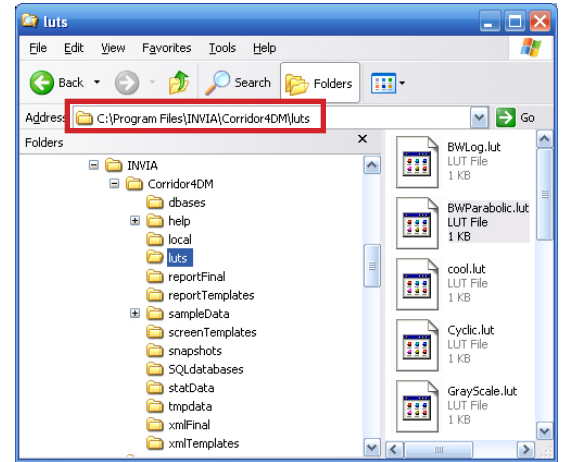


Figure 3: Shows the navigation path (red rectangle) on your PC where all color scheme files are stored for use within 4DM. The highlighted colorbar file "BWParabolic.lut" has been copied and pasted into this directory.

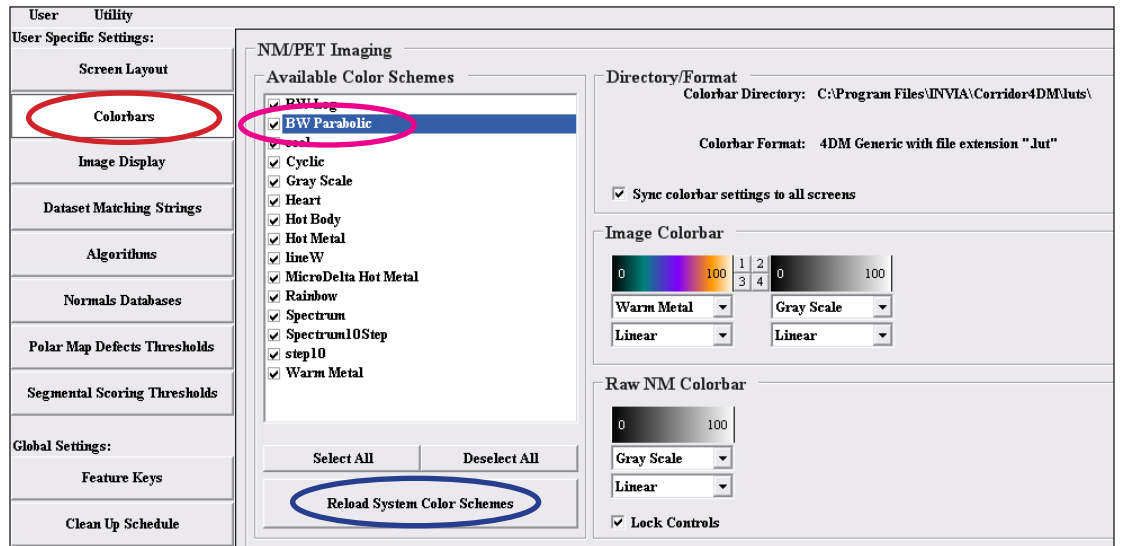


Figure 4: Shows the new BW Parabolic color scheme file in the Available Color Schemes list within Colorbar Preferences.

- A checkmark signifies that the new color scheme is activated for use/display within any applicable 4DM screen.