

QUICK REFERENCE **CORRIDOR4DM PERSONAL V6.1 SOFTWARE UPDATE GUIDE**

**Corridor4DM Version:**  
Personal v6.1



**Target Audience:**  
IT Personnel  
Physicians

**Primary Workstation:**  
Stand-alone PC or  
Laptop

**NOTE:**  
HASP = Hardware  
Against Software Piracy.  
The Dongle (HASP  
security USB stick)  
enables the user to launch  
4DM. If it is a Local  
(purple) HASP, then it  
must be plugged into the  
local machine. If it is a  
NET (red) HASP, then  
it can be plugged into  
any machine on the local  
network.



**Note:** If an error occurs  
during the update or you  
need assistance, please  
call our Product Support  
line at (734) 205-1231,  
x501.



**To complete the 4DM Personal update, follow these step-by-step instructions:**

- Close all Corridor4DM and Corridor Browser applications that may be running.
- Insert the Dongle (HASP security USB stick) into the computer.
- Insert the 4DM Installation CD into your PC's or laptop's CD/DVD Drive.
- At this point, the **InstallShield Wizard** program begins and will search for the installation requirements. If the installation wizard **does not** start automatically, navigate to the CD contents and double-click the **Setup** icon (Figure 1).
- Before installation continues, an **Installation Requirements** window will appear (Figure 2). Click **Install**.
- The **InstallShield Wizard for Corridor4DM(Personal) v6.1** window presents (Figure 3).
- Click **Next**.
- The installation may run for several minutes. Once complete, the **InstallShield Wizard Completed** window presents which states the application was successfully installed (Figure 4).
- Click **Finish** to exit the InstallShield Wizard.

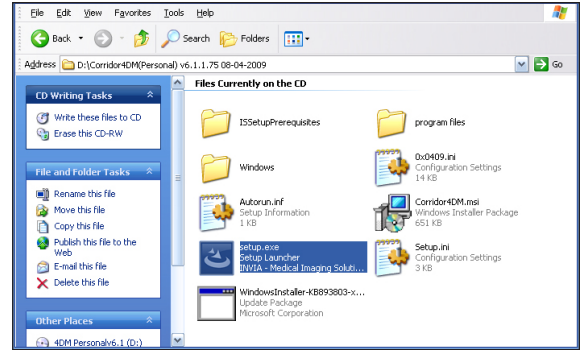


Figure 1: Shows the navigation path to the Setup.exe icon.

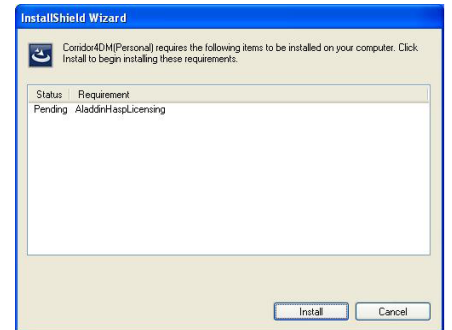


Figure 2: The **Installation Requirements** window

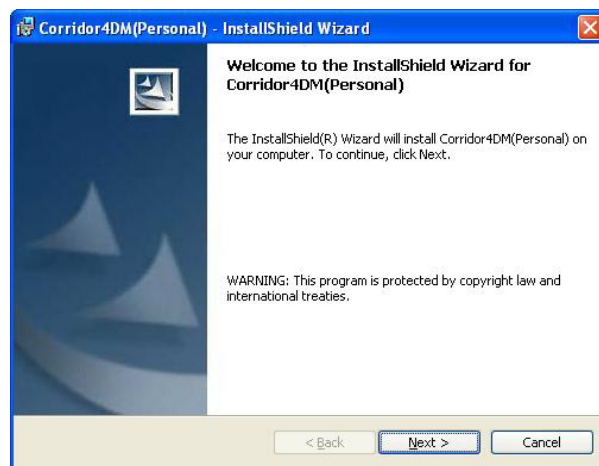


Figure 3: Shows the **Installation** window

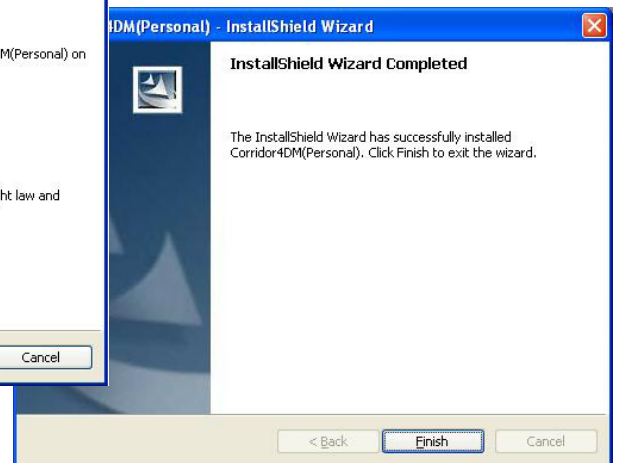


Figure 4: Shows the **Installation is Completed** window