

# Corridor4DM v2024 Preference Sync

## OVERVIEW

In 4DM v2024, users can designate a centralized location on the network to share 4DM preferences for 4DM client installations. Users will also be able to configure to synchronize the shared preferences for clients daily, or only initially at installation/upgrade. Choosing to synchronize the preferences for a client installation will ensure that updates made to the shared 4DM preferences are reflected on that client installation the next day at synchronization.

- Sync-Preferences starting with a Clean Installation
- Sync-Preferences while upgrading from prior version of 4DM
- Sync Utility Tool Functionality

## REQUIREMENTS

Your IT department will need to define the location on the network that can host the 4DM sync preferences and assign this location to be a shared directory with read/write permission for all 4DM users and 4DM client workstations.

## SYNC-PREFERENCES STARTING WITH A CLEAN INSTALLATION

Follow the steps below to apply and synchronize the shared preferences to an 4DM installation in v2024.

1. Prior to installing or upgrading to 4DM v2024, the configured 4DM preferences must be backed up and placed onto the network in an area that will be accessible for 4DM installs for all 4DM users. This requires users have read/write/modify permissions to the selected area. Please work with your IT team to confirm that the designated area for shared preferences is properly shared on the network. If this is not completed initially, users will not be able to access this area for a restore when the installation occurs and the default 4DM preferences will be installed.

2. Double-click the **Corridor4DM\_Installer** icon to install or upgrade to 4DM v2024.

3. Click the **Next** button (Figure 1) to proceed when prompted by the InstallShield Wizard.

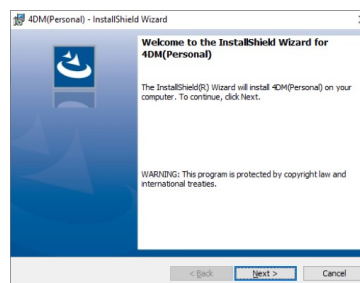


Figure 1: InstallShield Wizard

4. If you accept the License Agreement for 4DM, click the **I accept the terms in the license agreement** radio button (Figure 2).

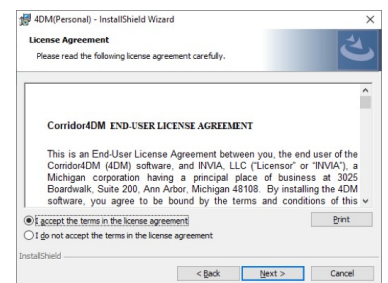


Figure 2: Review the terms

5. You can modify the User Name or Organization (Figure 3), if desired, then click the **Next** button to proceed.

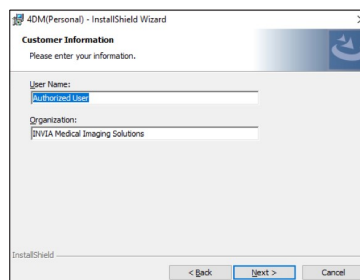


Figure 3: Username & Organization

6. Click the **Next** button to install 4DM in the default directory (C:\Program Files\INVIA\). This should not be changed (Figure 4).

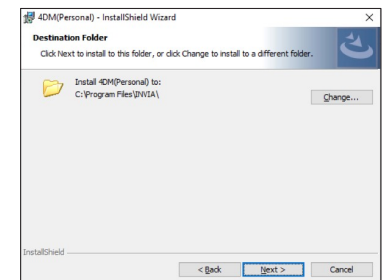


Figure 4: Do **not** change the directory

7. Click the **Install** button to confirm the installation using the current settings.

8. A message will be displayed (Figure 5) that the program is being installed and may take several minutes.

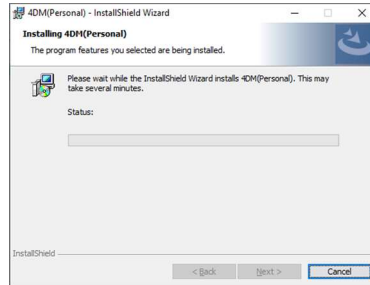


Figure 5: Installation progress bar

9. After a moment, a command prompt window will be displayed (Figure 6) as 4DM runs through the optimization installation. Please be patient as it completes the installation.

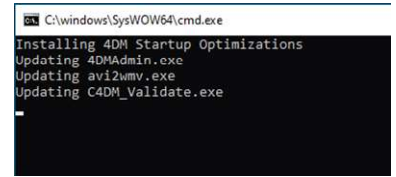


Figure 6: Command prompt window

10. Once the optimization is complete, the following message is displayed prompting users to restore 4DM preferences from the designated shared preferences area on your network (Figure 7). If you would like to restore your 4DM preferences from this area, select the **Yes** button to proceed. (If you choose **No**, the default 4DM preferences will be installed.)

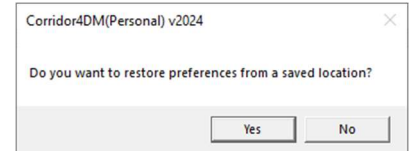


Figure 7: Restore preferences option

11. The Restore Configuration Files window (Figure 8) is displayed next. Click on the **folder icon** for the File Directory to browse to the designated shared preferences location on the system or network. 4DM will restore the preferences from this area.

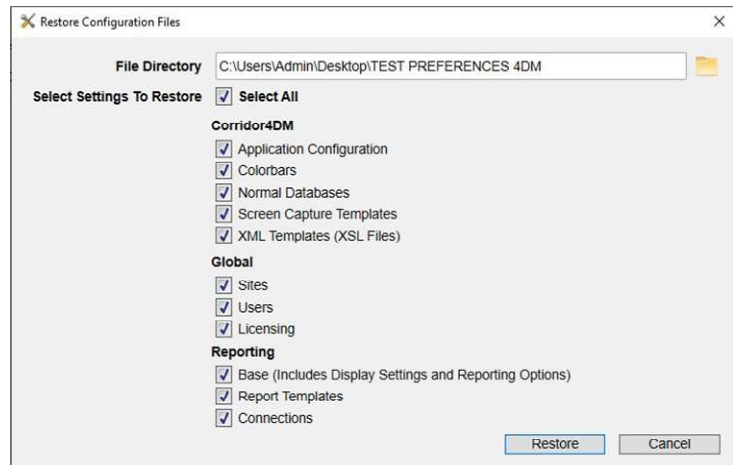


Figure 8: Restore Configuration window

- Once the File Directory is specified, users can choose to restore all or only part of the preferences backup by deselecting the check mark associated with the option. For example, deselecting the Licensing check box will not restore the license. By default, all options are selected.
- Once all options are chosen, select the **Restore** button to proceed and a message will be displayed stating the Restore was successful.



Figure 9: Restore was successful

12. Click **OK** to proceed (Figure 9).

13. A message is displayed to determine if preferences will be synchronized from this shared location daily (Figure 10). Click **Yes** if you would like preferences to be synchronized daily. If No is chosen, future updates made to the shared 4DM preferences area will not be reflected on this install automatically.

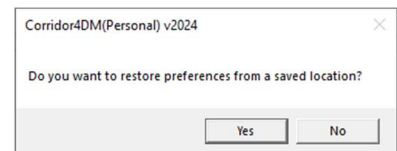


Figure 10: Synchronize option

14. Once preferences have been restored, and synchronization options selected, an INVIA Installation Validation window (Figure 11) will launch and run the Validation Tool. The 4DM software will quickly launch with at test patient and then close. The validation log can be found in C:\Users\Public\Documents\INVIA\Corridor4DM.

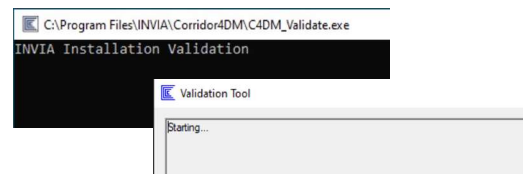


Figure 11: Validation tool

15. When the validation is complete, the message will be displayed that the InstallShield Wizard has completed. Click Finish to complete the installation/upgrade process.

## SYNC-PREFERENCES STARTING WITH AN UPGRADE INSTALLATION

Follow the steps below to apply and synchronize the shared preferences to an 4DM upgrade to v2024.

1. Click **Yes** to run an upgrade of 4DM to v2024 (Figure 12).
2. In the next window (Figure 13), click **No** if you would like to maintain the current preferences on this system from the previous version. Click **Yes** if you would like to restore the preferences from a shared location instead.
  - Installation Validation will run to verify the 4DM installation. The 4DM application will quickly launch, then close.
3. Click **Finish** to complete the installation and close the InstallShield Wizard window. If you are prompted to reboot the PC, click **Yes** to restart.

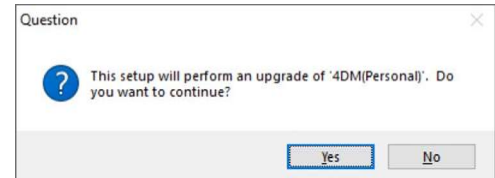


Figure 12: Click Yes to run an upgrade

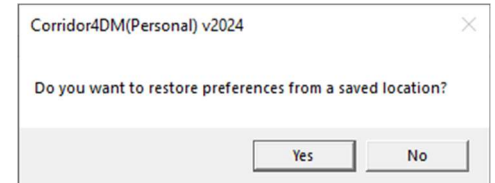


Figure 13: Click Yes to run an upgrade

## SYNC UTILITY TOOL FUNCTIONALITY

There are two files associated with the synchronization of 4DM preferences for users that utilize this functionality:

1. PreferencesSync.cfg – located in C:\Users\Public Documents\INVIA\Corridor4DM
  - Contains the pathway to the shared preference files.
2. \_lastSync.dat – Contains the date and time for the most recent sync of preferences. You can manually change this to the day prior to cause 4DM to sync again on the next launch.

Either of these two files can be deleted manually, and you can re-launch the AutoSync Utility manually via C:\Program Files\INVIA\Corridor4DM.