

Corridor4DM v2024 and Higher Preference Sync

OVERVIEW

In 4DM v2024 and higher, users can designate a centralized location on the network to share 4DM preferences for 4DM client installations. Users will also be able to configure to synchronize the shared preferences for clients daily, or only initially at installation/upgrade. Choosing to synchronize the preferences for a client installation will ensure that updates made to the shared 4DM preferences are reflected on that client installation the next day at synchronization.

This guide covers:

- Sync-Preferences starting with a Clean Installation
- Sync-Preferences while upgrading from prior version of 4DM
- Editing Location of Sync Preferences

REQUIREMENTS

Your IT department will need to define the location on the network that can host the 4DM sync preferences and assign this location to be a shared directory with read/write permission for all 4DM users and 4DM client workstations.

SYNC-PREFERENCES STARTING WITH A CLEAN INSTALLATION

Follow the steps below to apply and synchronize the shared preferences to a 4DM installation.

1. Prior to installing or upgrading 4DM, the configured 4DM preferences must be backed up and placed onto the network in an area that will be accessible for 4DM installs for all 4DM users. This requires users to read/write/modify permissions to the selected area. Please work with your IT team to confirm that the designated area for shared preferences is properly shared on the network. If this is not completed initially, users will not be able to access this area for a restore when the installation occurs and the default 4DM preferences will be installed.
2. Double-click the **Corridor4DM_Installer** icon to install or upgrade to 4DM.
3. Click the **Next** button (Figure 1) to proceed when prompted by the InstallShield Wizard.
4. If you accept the License Agreement for 4DM, click the **I accept the terms in the license agreement** radio button (Figure 2).
5. You can modify the User Name or Organization (Figure 3), if desired, then click the **Next** button to proceed.
6. Click the **Next** button to install 4DM in the default directory (C:\Program Files\INVIA\). This should not be changed (Figure 4).
7. Click the **Install** button to confirm the installation using the current settings.

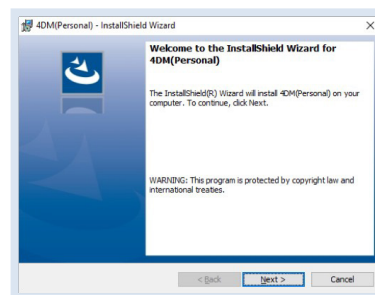


Figure 1: InstallShield Wizard

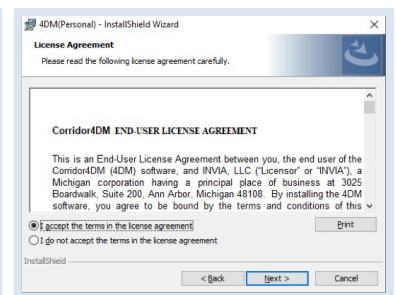


Figure 2: Review the terms

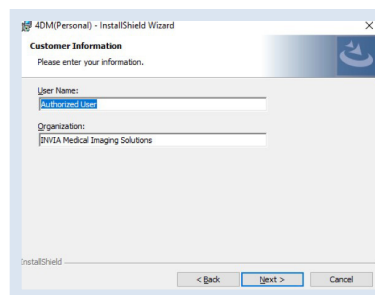


Figure 3: Username & Organization

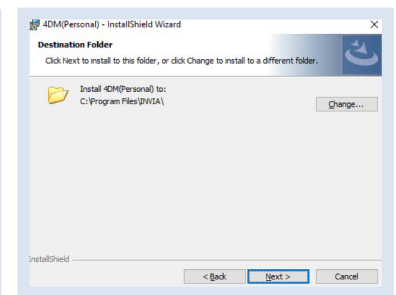


Figure 4: Do **not** change the directory

8. A message will be displayed (Figure 5) that the program is being installed and may take several minutes.

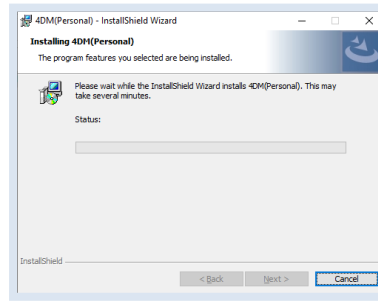


Figure 5: Installation progress bar

9. After a moment, a command prompt window will be displayed (Figure 6) as 4DM runs through the optimization installation. Please be patient as it completes the installation.

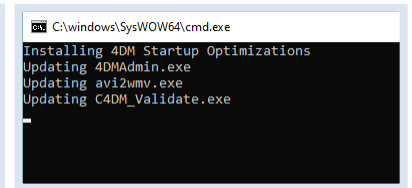


Figure 6: Command prompt window

10. Once the optimization is complete, the following message is displayed prompting users to restore 4DM preferences from the designated shared preferences area on your network (Figure 7). If you would like to restore your 4DM preferences from this area, select the Yes button to proceed. (If you choose No, the default 4DM preferences will be installed.)

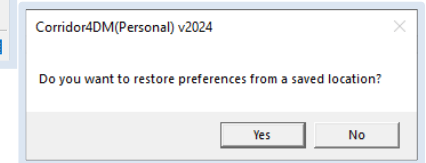


Figure 7: Restore preferences option

11. The Restore Configuration Files window (Figure 8) is displayed next. Click on the folder icon for the File Directory to browse to the designated shared preferences location on the system or network. 4DM will restore the preferences from this area.

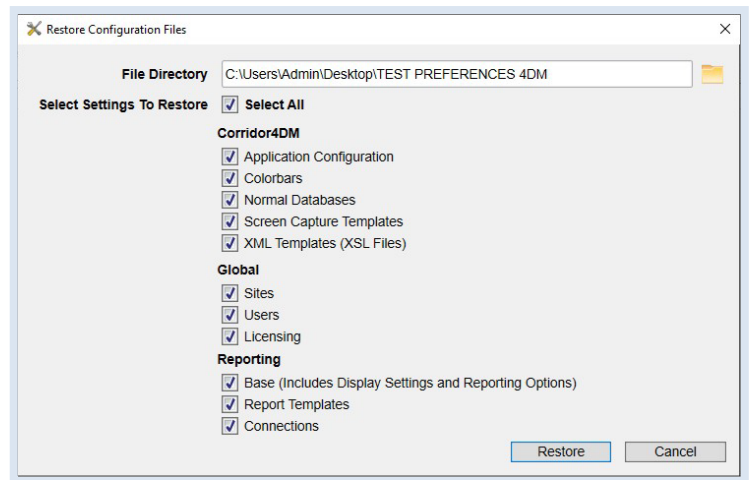


Figure 8: Restore Configuration window

- Once the File Directory is specified, users can choose to restore all or only part of the preferences backup by deselecting the check mark associated with the option. For example, deselecting the Licensing check box will not restore the license. By default, all options are selected.
- Once all options are chosen, select the **Restore** button to proceed and a message will be displayed stating the Restore was successful.

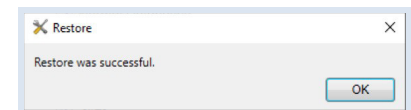


Figure 9: Restore was successful

12. Click **OK** to proceed (Figure 9).

13. A message is displayed to determine if preferences will be synchronized from this shared location daily (Figure 10). Click **Yes** if you would like preferences to be synchronized daily. If **No** is chosen, future updates made to the shared 4DM preferences area will not be reflected on this install automatically.

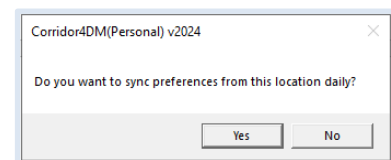


Figure 10: Synchronize option

14. Once preferences have been restored, and synchronization options selected, an INVIA Installation Validation window (Figure 11) will launch and run the Validation Tool. The 4DM software will quickly launch with at test patient and then close. The validation log can be found in C:\Users\Public\Documents\INVIA\Corridor4DM.

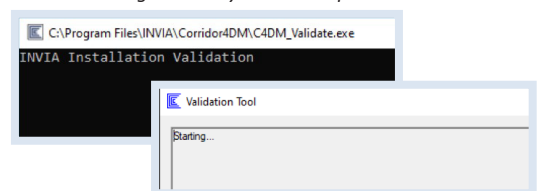


Figure 11: Validation tool

15. When the validation is complete, the message will be displayed that the InstallShield Wizard has completed. Click Finish to complete the installation/upgrade process. (Figure 12)

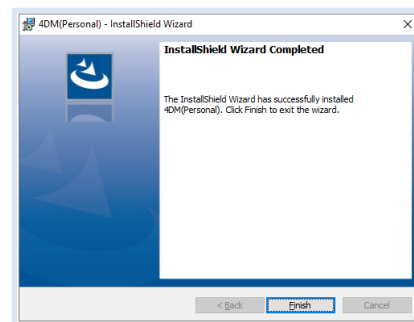


Figure 12: InstallShield Wizard Completed

SYNC-PREFERENCES STARTING WITH AN UPGRADE INSTALLATION

You can also sync preferences starting with an upgrade installation with the following steps.

1. Run the 4DM Installer. Click **Yes** to run an upgrade. (Figure 13)
2. In the next window (Figure 14), click **No** if you would like to maintain the current preferences on this system from the previous version. Click **Yes** if you would like to restore the preferences from a shared location instead. You will then repeat Step 3 through Step 15 from the “Sync Preferences Starting with a Clean Installation” section above.
3. If you select **Yes**, Figure 15 will appear. Here you may select the directory where you would like preferences to reside after selecting “Enabled”.

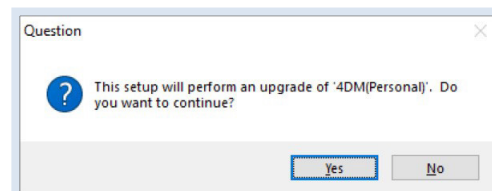


Figure 13: Click Yes to run an upgrade

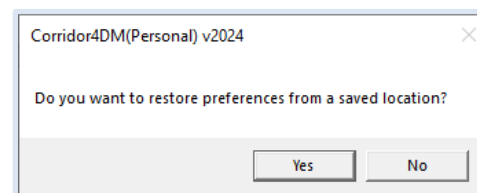


Figure 14: Click Yes to restore preferences

EDITING LOCATION OF SYNC PREFERENCES

4DM Personal users may manually edit the location of their shared preference by editing files on their computer. There are two files associated with the synchronization of 4DM preferences for users that utilize this functionality:

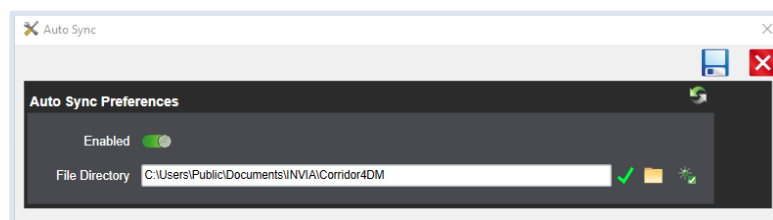


Figure 15: Select Directory

1. When Auto Sync is enabled on install it will create a file called “PreferencesSync.cfg”. This default location is C:\Users\Public\Public Documents\INVIA\Corridor4DM

- Contains the pathway to the shared preference files. You can manually edit the pathway

2. `_lastSync.dat` – Contains the date and time for the most recent sync of preferences. You can manually change this to the day prior, then save, to cause 4DM to sync again on the next launch.

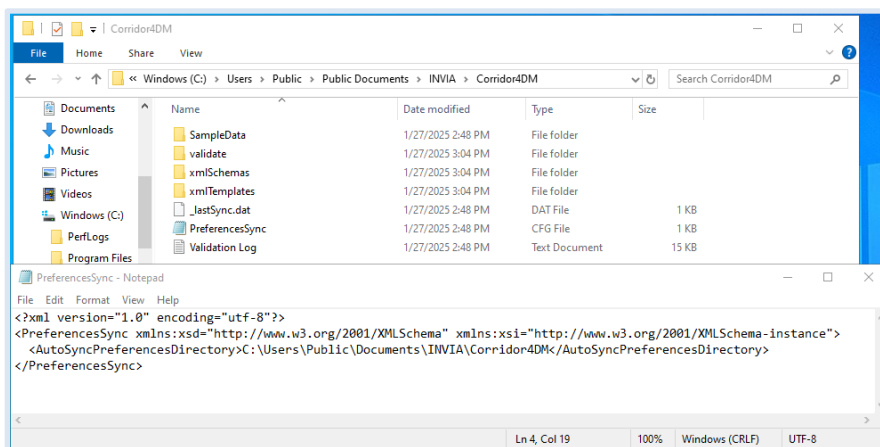


Figure 16: Auto Sync Files