

# Save 4DM DICOM Results

## OVERVIEW

Users can save adjustments to processing limits, regions of interest (ROI), or manually entered scores (e.g. segmental scores, calcium scores). Additionally, demographics and reporting information entered in the Corridor4DM integrated report generator can be saved as part of the patient image data. Collectively, the files that are stored are known as 4DM DICOM Result Files. Each subsequent time a patient is launched into Corridor4DM, the 4DM DICOM result files load along with patient image data.

## HOW-TO GUIDE

Users are encouraged to save DICOM results after the initial, and each subsequent time, patient datasets are launched and changes are made to patient image data processing.

### To save 4DM DICOM patient results, perform the following:

1. Launch patient data into 4DM.
2. Perform quality assurance and perform necessary processing adjustments to the patient data on the **MI Processing** screen or **MUGA** screen.
3. Assess 4DM review screens (e.g. Images, Images + Quant, CT Viewer) and make any necessary observations or measurements.
4. Enter patient demographic, history, or report findings using the **Reporting** button.
5. Select the **Save** button from the **Control Panel** (see 1 Figure 1).
6. Make selections under **Result Format**, **Result State** and **Datasets to Save**. (Figure 1)
  - a. Result Format control permits the user to define the number of 4DM result files generated.
    - Selecting **Composite** results in a single file that contains a copy of all data listed in the **Datasets to Save** dialog.
    - Selecting **Individual** results in unique 4DM result files for every file present in the **Datasets to Save** dialog.
  - b. Result State allows the user to define a unique DICOM description tag to be appended to the end of datasets Series Description Name. The options include:
    - **Preliminary**: Means a 4DM Report has not been finalized or amended.
    - **Finalized**: Means user generated and signed a report within 4DM Reporting interface.
    - **Amended**: Means user has Amended the report and signed it within 4DM Reporting interface.
    - **Research**: Can be added to flag or identify studies to be utilized for research purposes.
  - c. **Datasets to Save** provides an interface for users to exclude datasets from either being added to composite result or individual result file being generated in association with that dataset.
7. Then select the **Save** icon.

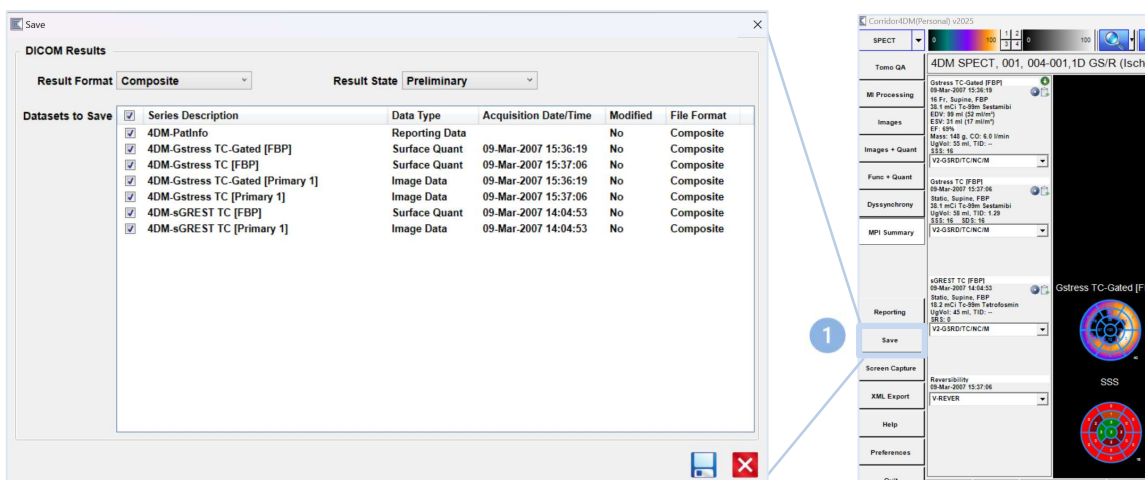


Figure 1. Save Data window

### SAVE RESULTS SETTINGS

4DM Save DICOM results settings can be selected each time the **Save** button in the control panel is clicked to apply save results settings specific to the patient image data that is currently loaded. The settings can also be configured as a **Global Setting** within the application, which configures the pre-selected save DICOM results settings for all patient image data launched into 4DM.

To access and configure the Save Data global settings, perform the following:

1. Click the **Preferences** button (see 1 Figure 2) in the **Control Panel**.
2. Select the **Data Export** page (see 2 Figure 2).

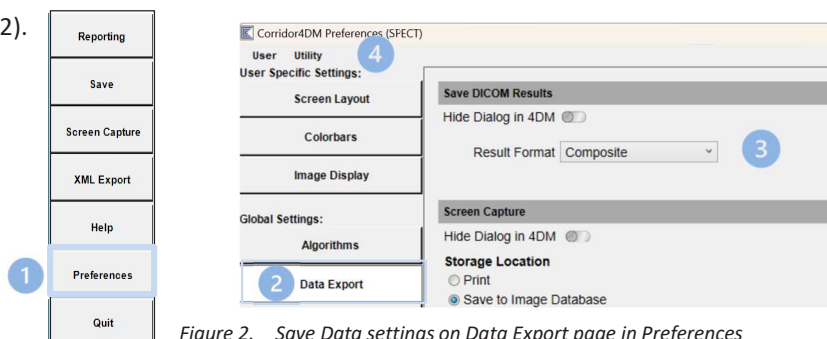


Figure 2. Save Data settings on Data Export page in Preferences

To configure Save Data settings in the Save Data window or Save Data Global Settings, perform the following:

1. Select **Result Format** (See 3 Figure 2)
  - a. **Individual**: Result files are saved separately for each reconstructed dataset launched into 4DM.
  - b. **Composite**: Result files for each selected dataset launched into 4DM are saved as a single file.

If the **Data Export** page settings are configured within Preferences, click **Save** to permanently store the save DICOM results settings for all patient image data launched into 4DM.

To configure DICOM Push-to-Remote DICOM node from 4DM Save Dialog

1. Click the Preferences button (See 1 Figure 2) in the Control Panel.
2. Select "Utility". (See 4, Figure 2)
3. Select "Administration Login".
4. The 4DM Admin sign in interface is displayed. (See Figure 3)
5. Select Sign In (no password required).
6. Select "Connections" under the 4DM grouping (See 1, Figure 4)

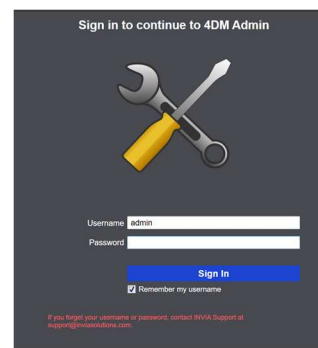


Figure 3. 4DM Admin Sign-In

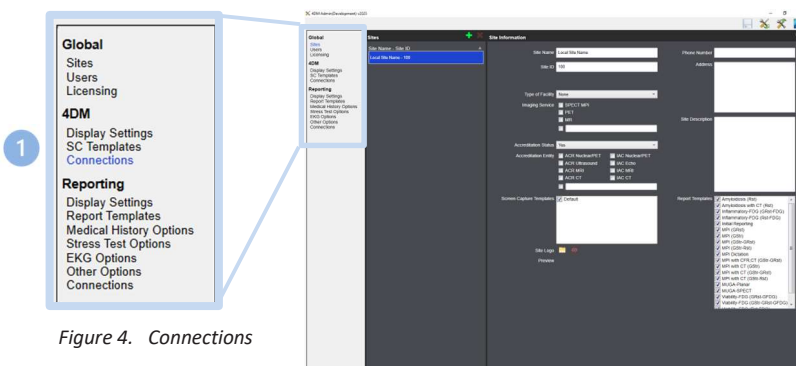



Figure 4. Connections

7. Select “+” icon (See 1 , Figure 5) to add the Remote DICOM node details you want to push 4DM Result files to when you select the Save button.
  - a. Requires you enter Name (Any name that allows user to know remote node location), Remote Nodes IP Address, Remote nodes DICOM Listener Port, and Remote Nodes AE Title. (See 2 , Figure 5)
  - b. Select the Test Connectivity icon. (See 3 , Figure 5)
  - c. Confirm receive a Pass connectivity message in the testing results window. (See Figure 6)
  - d. Select Save Icon. 
  - e. Close 4DM Admin.
  - f. Close 4DM Preferences.
  - g. Close 4DM.
  - h. Upon next launch of 4DM, both the 4DM Save Dialog and the Preferences Data Export Save dialogs will allow user to select the ability to save to both hosting system database and push to remote node or individual define location of the 4DM Result files.

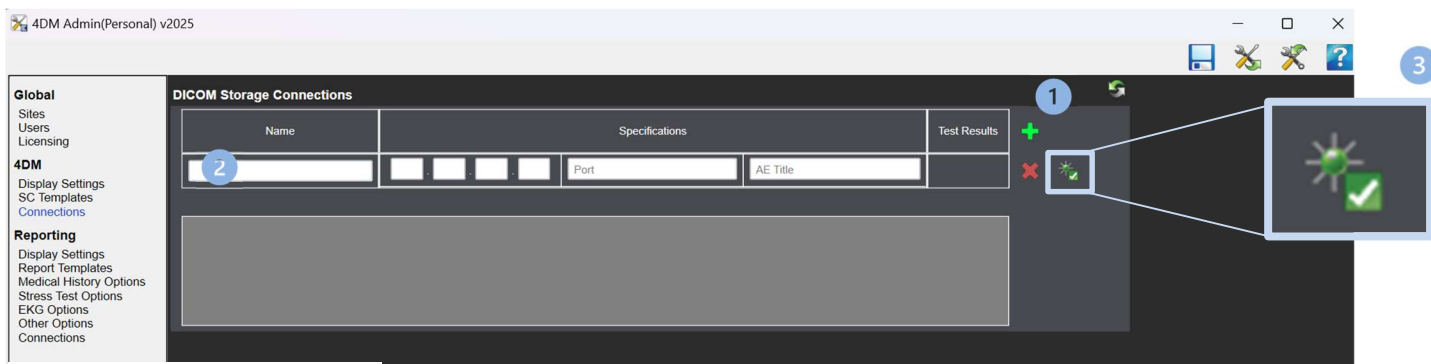


Figure 5. Test Connectivity

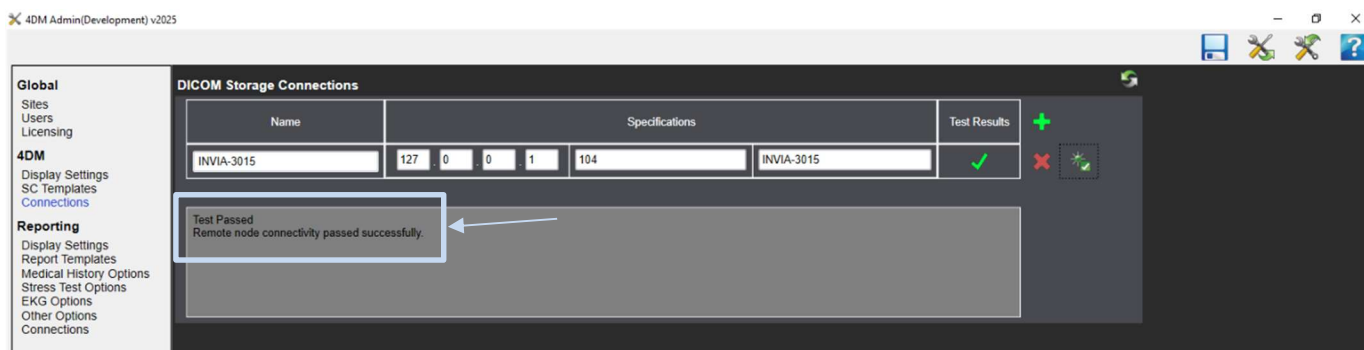


Figure 6. Pass Connectivity Message