

Customize Colorbar Settings - All Screens

OVERVIEW

The user can customize their colorbar preferences and synchronize this setting to all screens within a standard or user-specific 4DM workflow. This customization is saved as a part of the workflow, and it can be transferred to additional 4DM workstations using the preferences backup and restore functions within 4DM.

i For assistance with transferring colorbar settings to other workstations, refer to the **Backing Up Preferences and Restoring Preferences** Reference Guides.

HOW-TO GUIDE

To customize colorbar settings for all screens for a user-specific workflow, perform the following:

1. Launch a patient into 4DM.
2. Select the **Preferences** button (see ❶ Figure 1) from the **Control Panel**.
3. Select the **User** menu (see ❶ Figure 2) from the **Preferences Window Menu**.
4. Click **Select User** (see ❷ Figure 2) and choose the desired standard or user-specific 4DM workflow.

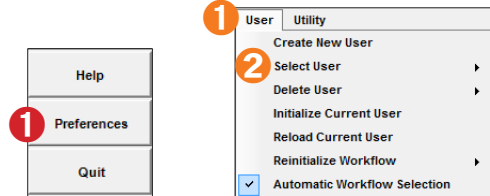


Figure 1. Control Panel

Figure 2. Utility menu in Preferences

5. Select the **Colorbars** page (see ❶ Figure 3) and check the **Sync colorbar settings to all screens** toggle (see ❷ Figure 3).
6. Change the following colorbar preferences:
 - **Image Colorbar** - Select the colorbar menu (see ❸ Figure 3) to change the settings for **Primary** and **Secondary** colorbars for screens with a Dual Colorbar (e.g. Images, Func + Quant, MPI Summary).
 - **Raw NM Colorbar** - Select the colorbar menu (see ❹ Figure 3) to change the settings for screens that display raw Nuclear Medicine data (e.g. Tomo QA, NM Viewer).
 - **CT Colorbar** - Select the colorbar menu (see ❺ Figure 3) to change the settings for screens that display CT image data.
7. Click **Save** to permanently store the colorbar settings as part of the selected standard or user-specific 4DM workflow.
8. Repeat these steps to modify the colorbar settings for any additional workflows.

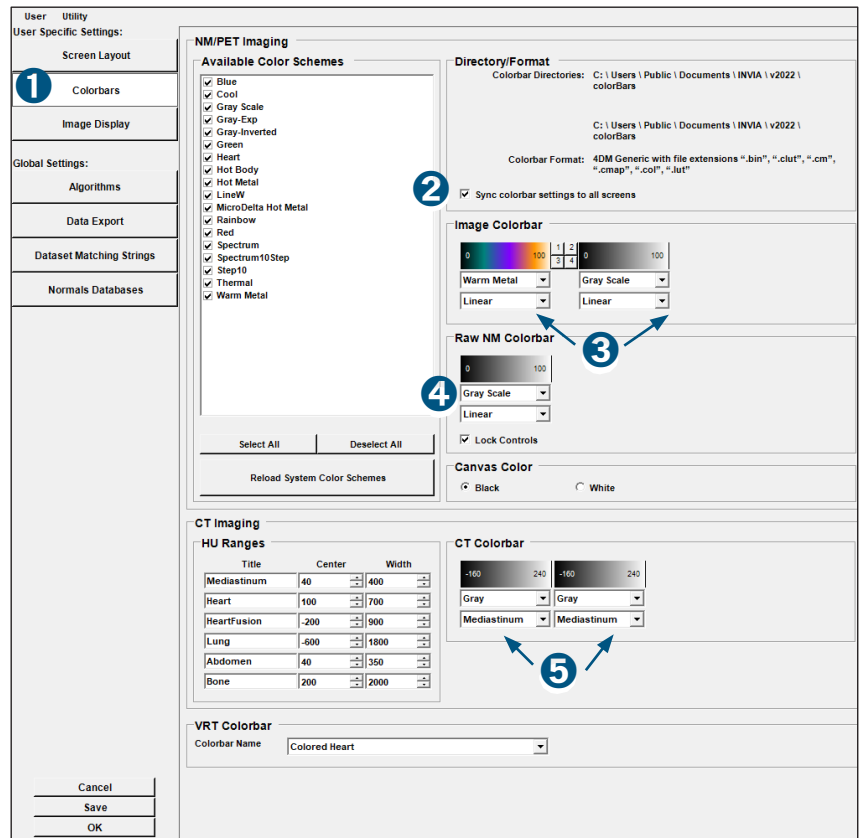


Figure 3. Colorbars settings in Preferences