

Customize Colorbar Settings - Individual Screens

OVERVIEW

Each screen within any workflow can be assigned a specific, recurring colorbar, regardless of the colorbars assigned to other screens or workflows. This level of customization permits the user to view objects on different screens with preferred colorbars. Additionally, customized colorbar settings can be saved and transferred to other 4DM workstations using the **Backup** and **Restore** functions within 4DM.

i For assistance with transferring colorbar settings, refer to the **Backing Up Preferences** and **Restoring Preferences** Reference Guides.

HOW-TO GUIDE

For this example, we will customize the colorbar settings for the Images workflow screen. To customize colorbar settings for this workflow screen, perform the following:

1. Launch a patient into 4DM.
2. Select the **Preferences** button (see **1** Figure 1) from the **Control Panel**.
3. Select the **User** menu (see **1** Figure 2) from the *Preferences window menu*.
4. Click **Select User** (see **2** Figure 2) and choose the desired standard or user-specific 4DM workflow.
5. Select the **Colorbars** page (see **1** Figure 3) and uncheck the **Sync colorbar settings to all screens** toggle (see **2** Figure 3).

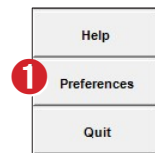


Figure 1. Control Panel

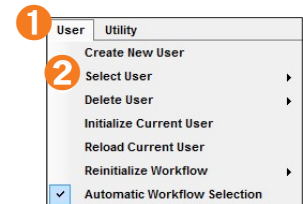


Figure 2. Utility menu in Preferences

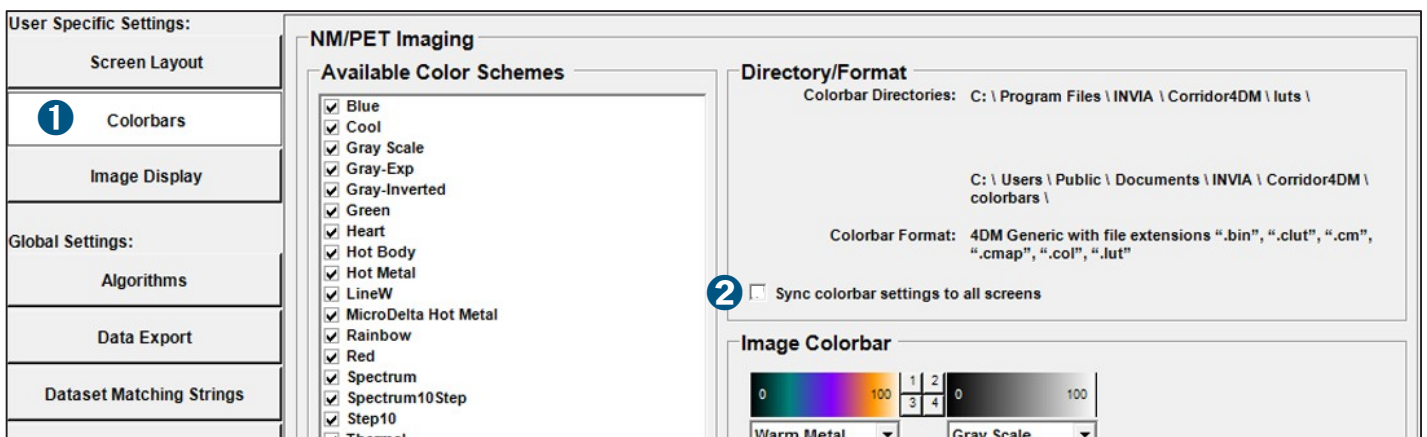


Figure 3. Colorbars page in Preferences

! The **Sync colorbar settings to all screens** toggle overrides individual screen color scheme changes with the preferences set on the **Colorbars** page.

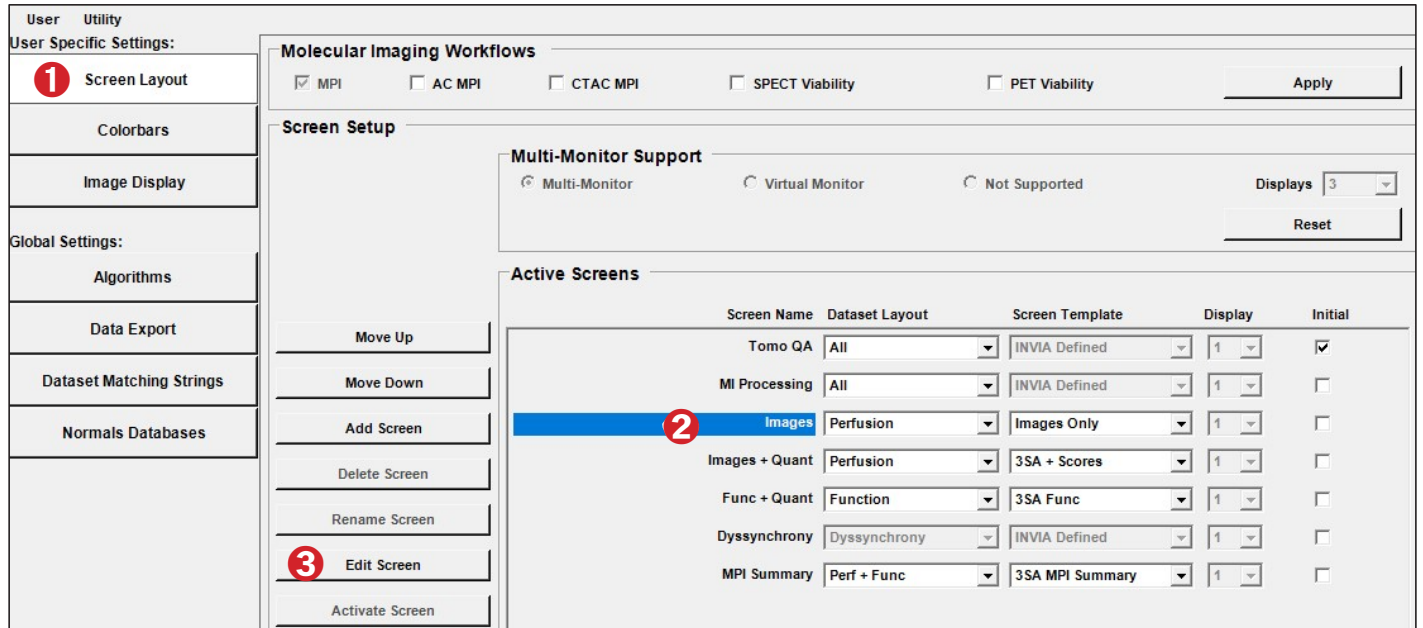


Figure 4. Screen Layout page in Preferences

6. Select the **Screen Layout** page (see 1 Figure 4).
7. Select the **Images** workflow screen (see 2 Figure 4) under **Active Screens** and click the **Edit Screen** button (see 3 Figure 4) to open the *Screen Designer* window.
8. Right-click the **Primary** colorbar (see 1 Figure 5) and select your preferred colorbar.
9. Right-click the **Secondary** colorbar (see 2 Figure 5) and select your preferred colorbar.
10. Click **Close** to exit the *Screen Designer* window.
11. Click **Save** to permanently store the colorbar settings for the individual workflow screens that you modified as part of the selected workflow. Repeat the above for each workflow/workflow screen combination needed.

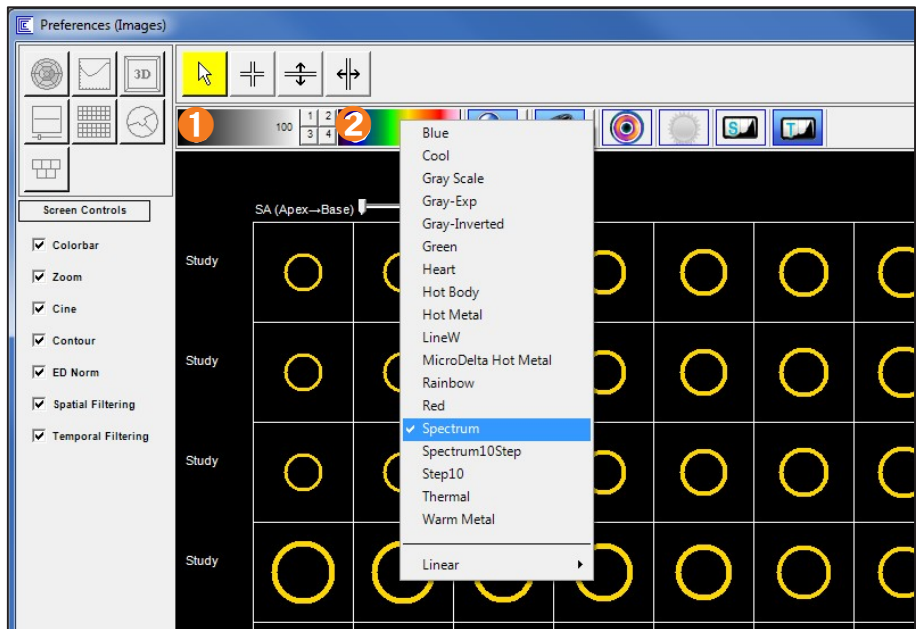


Figure 5. Screen Designer window with Images workflow screen